

# Using Linked Open Data for Georgia's Natural Cultural and Historic Organizations' Disaster Response (GaNCH)

LYRASIS Member Summit

October 3, 2019

Chicago, IL

# Atlanta University Center Robert W. Woodruff Library



- **Clark Atlanta University**
- **Interdenominational Theological Center**

- **Morehouse College**
- **Spelman College**



# Project Team



- Christine Wiseman
- Co-PI
- Department Head,  
Digital Services  
Department, AUC  
RWL



- Matthew Stephens
- Web Developer



- Cliff Landis
- Co-PI
- Digital Initiatives  
Librarian, AUC RWL



- Allyson F. Smith
- Graduate Student  
Assistant



# Our Partners



Atlanta University Center  
Robert W. Woodruff Library



Georgia Historical Records  
Advisory Council



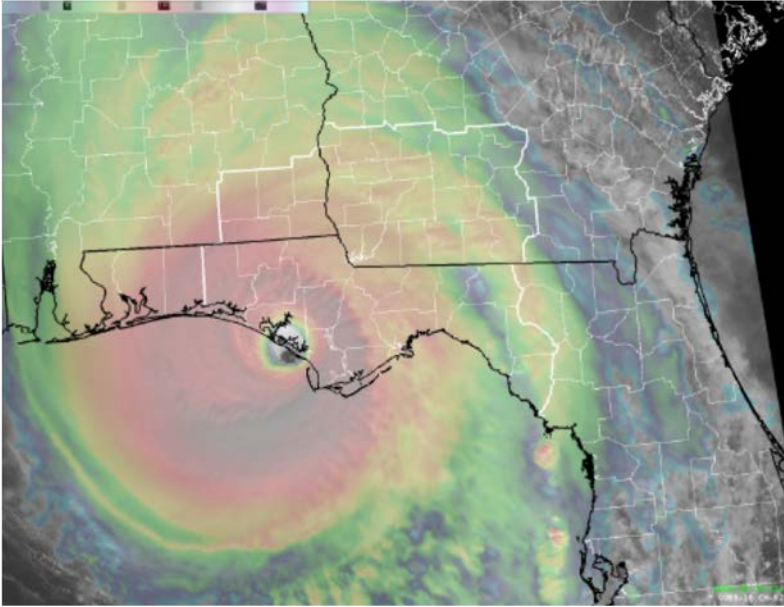
THANK YOU!



LYRASIS<sup>®</sup>



# Why Does Georgia Need This?



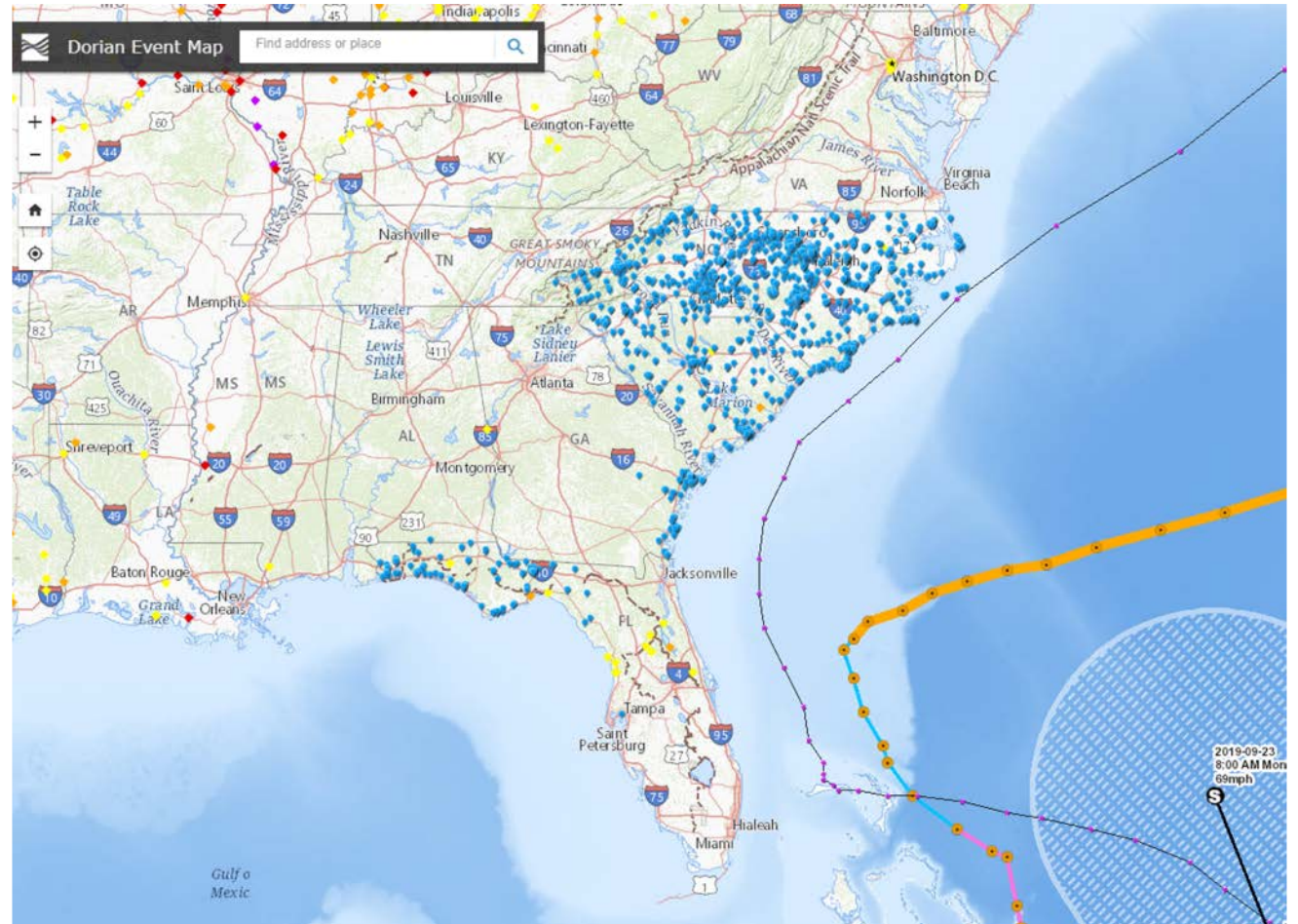
[www.weather.go](http://www.weather.go)

v



[www.wsbtv.com](http://www.wsbtv.com)

# Hurricane Dorian Event Map, FEMA



Showing 1 to 50 of 678 entries

[Previous](#) [1](#) [2](#) [3](#) [4](#) [5](#) ... [14](#) [Next](#)

| ORGANIZATION NAME   | CATEGORY(ies)   | CITY            | COUNTY     |
|---|---|-----------------|------------|
| <a href="#">6th Cavalry Museum</a>  | Museum  | Fort Oglethorpe | Catoosa    |
| <a href="#">Acworth Society for Historic Preservation</a>   | Academic Library (Archives or Special Collections), Historical Society, Library (Public, Research, Special, etc.) | Acworth         | Cobb       |
| <a href="#">Afro-American Historical and Genealogical Society, Inc. (AAHGS) - Metro Atlanta Chapter</a> | Genealogical Society, Historical Society  | Atlanta         | Fulton     |
| <a href="#">Albany Civil Rights Institute</a>   | Museum  | Albany          | Dougherty  |
| <a href="#">Albany Museum of Art</a>  | Museum  | Albany          | Dougherty  |
| <a href="#">Alexander H. Stephens State Park</a><br>[Georgia State Parks and Historic Sites]            | Historic Site (Parks, etc.), Museum   | Crawfordville   | Taliaferro |
| <a href="#">All Saints' Episcopal Church Archives and Library</a>                                       | Archives, Library (Public, Research, Special, etc.)   | Atlanta         | Fulton     |
| <a href="#">Allman Brothers and Band Museum</a>   | Library (Public, Research, Special, etc.), Museum   | Macon           | Bibb       |
| <a href="#">Alma-Bacon County Historical Center</a>   | Historical Society, Museum  | Alma            | Bacon      |



Previous 1 2 3 4 5 ... 14 Next

| Organization Name   | Category(ies)   | City            | County     |
|---|---|-----------------|------------|
| 6th Cavalry Museum  | Museum  | Fort Oglethorpe | Catoosa    |
| Acworth Society for Historic Preservation   | Academic Library (Archives or Special Collections), Historical Society, Library (Public, Research, Special, etc.) | Acworth         | Cobb       |
| Afro-American Historical and Genealogical Society, Inc. (AAHGS) - Metro Atlanta Chapter | Genealogical Society, Historical Society  | Atlanta         | Fulton     |
| Albany Civil Rights Institute   | Museum  | Albany          | Dougherty  |
| Albany Museum of Art  | Museum  | Albany          | Dougherty  |
| Alexander H. Stephens State Park<br>[Georgia State Parks and Historic Sites]            | Historic Site (Parks, etc.), Museum   | Crawfordville   | Taliaferro |
| All Saints' Episcopal Church Archives and Library                                       | Archives, Library (Public, Research, Special, etc.)   | Atlanta         | Fulton     |
| Allman Brothers and Band Museum   | Library (Public, Research, Special, etc.), Museum   | Macon           | Bibb       |
| Alma-Bacon County Historical Center   | Historical Society, Museum  | Alma            | Bacon      |

## APPLING COUNTY - CRAWFORD COUNTY

DECATUR COUNTY - LOWNDES COUNTY

MACON COUNTY – WORTH COUNTY

## Appling County

APPLING COUNTY HERITAGE CENTER

P.O. Box 87, Baxley, GA 31515-0087

[www.baxley.org](http://www.baxley.org)

## Bacon County

HISTORICAL SOCIETY OF ALMA BACON COUNTY

406 Mercer Street, Alma, GA 31510-2136

## Baldwin County

GEORGIA ARCHIVES  
UNIVERSITY SYSTEM OF GEORGIA

Home About Us Visit Research Government Agencies Partners Caring for Records

Showing 1 to 50 of 678 entries

Previous 1 2 3 4 5 ... 14 Next

| ORGANIZATION NAME   | CATEGORY(ies)   | CITY            | COUNTY  |
|---|---|-----------------|---------|
| 6th Cavalry Museum  | Museum  | Fort Oglethorpe | Catoosa |
| Acworth Society for Historic Preservation   | Academic Library (Archives or Special Collections), Historical Society, Library (Public, Research, Special, etc.) | Acworth         | Cobb    |
| Afro-American Historical and Genealogical Society, Inc. (AAHGS) - Metro Atlanta Chapter | Genealogical Society, Historical Society  | Atlanta         | Fulton  |

# GAMG



[Committees](#)

[Membership](#)

[Contact Us](#)

[Museum Links](#)

[News and Events](#)

[Annual Conference](#)

[Calendar](#)

[Museum Jobs](#)

6th Cavalry Museum  
PO Box 2011  
2 Barnhardt Circle  
Ft. Oglethorpe, GA 30742  
Tel: 706-861-2860  
Web: [www.6thcavalrymuseum.com](http://www.6thcavalrymuseum.com)

Albany Museum of Art  
311 Meadowlark Drive  
Albany, GA 31707  
Tel: 229-439-8400  
Email: [info@albanymuseum.com](mailto:info@albanymuseum.com)  
Web: [www.albanymuseum.com](http://www.albanymuseum.com)

Allman Brothers Band Museum at the Big House  
PO Box 4291  
Macon, GA 31208-4291  
Tel: 478-741-5551  
Email: [info@thebighousemuseum.org](mailto:info@thebighousemuseum.org)  
Web: [www.thebighousemuseum.org](http://www.thebighousemuseum.org)

A - B - C - D - E -  
F - G - H - I - J -  
K - L - M - N - O -  
P - Q - R - S - T -  
U - V - W - X - Y -

GEORGIA HISTORICAL SOCIETY

RESEARCH PUBLICATIONS LEARN EVENTS ABOUT SUPPORT Q

## Affiliate Chapter List by County

APPLING COUNTY - CRAWFORD COUNTY DECATUR COUNTY - LOWNEDES COUNTY MACON COUNTY - WORTH COUNTY

### Appling County

APPLING COUNTY HERITAGE CENTER  
P.O. Box 87, Baxley, GA 31515-0087  
[www.baxley.org](http://www.baxley.org)

### Bacon County

HISTORICAL SOCIETY OF ALMA BACON COUNTY  
406 Mercer Street, Alma, GA 31510-2136

### Baldwin County

GEORGIA ARCHIVES  
UNIVERSITY SYSTEM OF GEORGIA

Home About Us Visit Research Government Agencies Partners Caring for Records

Showing 1 to 50 of 678 entries

Previous 1 2 3 4 5 ... 14 Next

| ORGANIZATION NAME   | CATEGORY(ies)   | CITY            | COUNTY  |
|---|---|-----------------|---------|
| 6th Cavalry Museum  | Museum  | Fort Oglethorpe | Catoosa |
| Acworth Society for Historic Preservation   | Academic Library (Archives or Special Collections), Historical Society, Library (Public, Research, Special, etc.) | Acworth         | Cobb    |
| Afro-American Historical and Genealogical Society, Inc. (AAHGS) - Metro Atlanta Chapter | Genealogical Society, Historical Society  | Atlanta         | Fulton  |

# GAMG



[Committees](#)

[Membership](#)

[Contact Us](#)

[Museum Links](#)

[News and Events](#)

[Annual Conference](#)

[Calendar](#)

[Museum Jobs](#)

6th Cavalry Museum  
PO Box 2011  
2 Barnhardt Circle  
Ft. Oglethorpe, GA 30742  
Tel: 706-861-2860  
Web: [www.6thcavalrymuseum.com](http://www.6thcavalrymuseum.com)

Albany Museum of Art  
311 Meadowlark Drive  
Albany, GA 31707  
Tel: 229-439-8400  
Email: [info@albanymuseum.com](mailto:info@albanymuseum.com)  
Web: [www.albanymuseum.com](http://www.albanymuseum.com)

Allman Brothers Band Museum at the Big House  
PO Box 4291  
Macon, GA 31208-4291  
Tel: 478-741-5551  
Email: [info@thebighousemuseum.org](mailto:info@thebighousemuseum.org)  
Web: [www.thebighousemuseum.org](http://www.thebighousemuseum.org)

A - B - C - D - E -  
F - G - H - I - J -  
K - L - M - N - O -  
P - Q - R - S - T -  
U - V

GEORGIA HISTORICAL SOCIETY

RESEARCH PUBLICATIONS LEARN EVENTS ABOUT SUPPORT

## Affiliate Chapter List by County

APPLING COUNTY - CRAWFORD COUNTY DECATUR COUNTY - LOWNEDES COUNTY MACON COUNTY - WORTH COUNTY

### Appling County

APPLING COUNTY HERITAGE CENTER  
P.O. Box 87, Baxley, GA 31515-0087

 **GEORGIA PUBLIC LIBRARY SERVICE**

[FIND A LIBRARY](#)

[GET A LIBRARY CARD](#)

Home About Resources for Librarians Library Visitors Kids News Contact **Jobs**

### All Public Library Facilities

You are here: Home > All Public Library Facilities

Show 10 entries

Search:

| System                        | Facility                | Address   | Phone          |
|-------------------------------|-------------------------|---|----------------|
| Independent municipal library | Fairmount City Library  | 150 North Avenue Fairmount, GA 30139              | (706) 337-3110 |
| Independent municipal library | Newnan Carnegie         | 1 LaGrange Street Newnan, GA 30263                | 770-683-1347   |
| Independent municipal library | Sayers Memorial Library | 6870 Wold Avenue, Bldg. 93 Fort Benning, GA 31905 | 706-545-4911   |
| Independent municipal library | Smyrna Public Library   | 100 Village Green Circle Smyrna, GA 30080         | (770) 431-2860 |

GEORGIA ARCHIVES  
UNIVERSITY SYSTEM OF GEORGIA

Home About Us Visit

Showing 1 to 50 of 678 entries

Previous 1 2 3 4 5 ... 14 Next

| ORGANIZATION NAME   | CATEGORY                       |
|---|--------------------------------|
| 6th Cavalry Museum  | Museum                         |
| Acworth Society for Historic Preservation   | Academic Lib<br>Society, Libra |
| Afro-American Historical and Genealogical Society, Inc. (AAHGS) - Metro Atlanta Chapter | Genealogical                   |

# GAM

Committees  
Membership

6th Cavalry Museum  
PO Box 2011  
2 Barbours Circle

Technical College  
System of Georgia

Programs Colleges Why TCSG? For Students About TCSG Foundation [Apply Now](#)

## List of Colleges



Albany Technical College  
1704 South Slappey Blvd.  
Albany, GA 31701-2648  
(229) 430.3500  
[www.albanytech.edu](http://www.albanytech.edu)

+ Additional Campus

[Apply today!](#)

[Directions](#)

[Programs](#)



Athens Technical College  
800 U.S. Hwy. 29 N.  
Athens, GA 30601-1500  
(706) 355.5000  
[www.athenstech.edu](http://www.athenstech.edu)

+ Additional Campuses

[Apply today!](#)

[Directions](#)

[Programs](#)



Atlanta Technical College  
1560 Metropolitan Pkwy. SW  
Atlanta, GA 30310

[Apply Today!](#)

[Directions](#)



ATIONS LEARN EVENTS ABOUT SUPPORT Q

MACON COUNTY - WORTH COUNTY

[FIND A LIBRARY](#)

[GET A LIBRARY CARD](#)

GALILEO  
An Initiative of the University System of Georgia

Home  
About GALILEO  
Contact Us  
Help

Georgia's Virtual Library...bringing quality content to you!

### About GALILEO

- About the Initiative
- Participating Institutions
  - Database Listing
  - Library Catalogs
- Governance
- Policies
- Assessment
- GALILEO Staff
- News and Events
- For Library Staff

## Participating Institutions

### GALILEO Consortium:

[University System of Georgia Libraries](#) [Atlanta/Macon Private Academic Libraries](#) [Georgia Private Academic Libraries](#) [Technical College System of Georgia Libraries](#) [Department of Education \(K-12\)](#) [Georgia Independent School Association Participants](#) [Georgia Public Libraries](#)

### University System of Georgia Libraries

- Abraham Baldwin Agricultural College (ABAC): Baldwin Library
- Albany State University: James Pendergrast Memorial Library
- Atlanta Metropolitan State College Library
- Augusta University
- Clayton State University\*
- College of Coastal Georgia: Clara Wood Gould Memorial Library

THE CLERKS  
AUTHORITY

Georgia Superior Court Clerks' Cooperative Authority

glossary login contact  search



County Code

## FEATURED CLERKS



08.2019



05.2019



03.2019

FILE  
SEARCH  
LEARN  
MANAGE  
FINES & FEES  
NOTARY & APOSTILLES

activities

# GLAM in GA with coordinate information

The screenshot displays the Wikidata Query Service interface. At the top, there are navigation links for Examples, Help, and More tools, along with a language selector set to English. The main area is divided into a Query Helper section on the left and a SPARQL query editor on the right.

**Query Helper:**

- Filter:** Includes "instance of" (any), "subclass of" (GLAM), and "located in the administrative territorial entity" (Georgia).
- Show:** Includes "coordinate location".
- Limit:** Set to 10000.

**SPARQL Query:**

```
1 #Map of Libraries in Canada
2 # Canadian libraries on a map (must have coordinates!)
3 #defaultView:Map
4 SELECT ?library ?libraryLabel ?coords WHERE {
5   SERVICE wikibase:label { bd:serviceParam wikibase:language "[AUTO_LANGUAGE],en,en-gb"
6   ?library (wdt:P31/(wdt:P279*)) wdt:Q1030034;
7   wdt:P131 wdt:Q1428;
8   wdt:P625 ?coords.
9 }
10 LIMIT 10000
```

Below the query editor, a map of Georgia is displayed, showing the locations of libraries marked with red dots. The map includes a scale bar indicating 40 results in 1563566292046 ms. Navigation controls for the map are visible on the left side.



Wikidata Query Service

Examples Help More tools

English

Query Helper

Filter

instance of any GLAM

subclass of

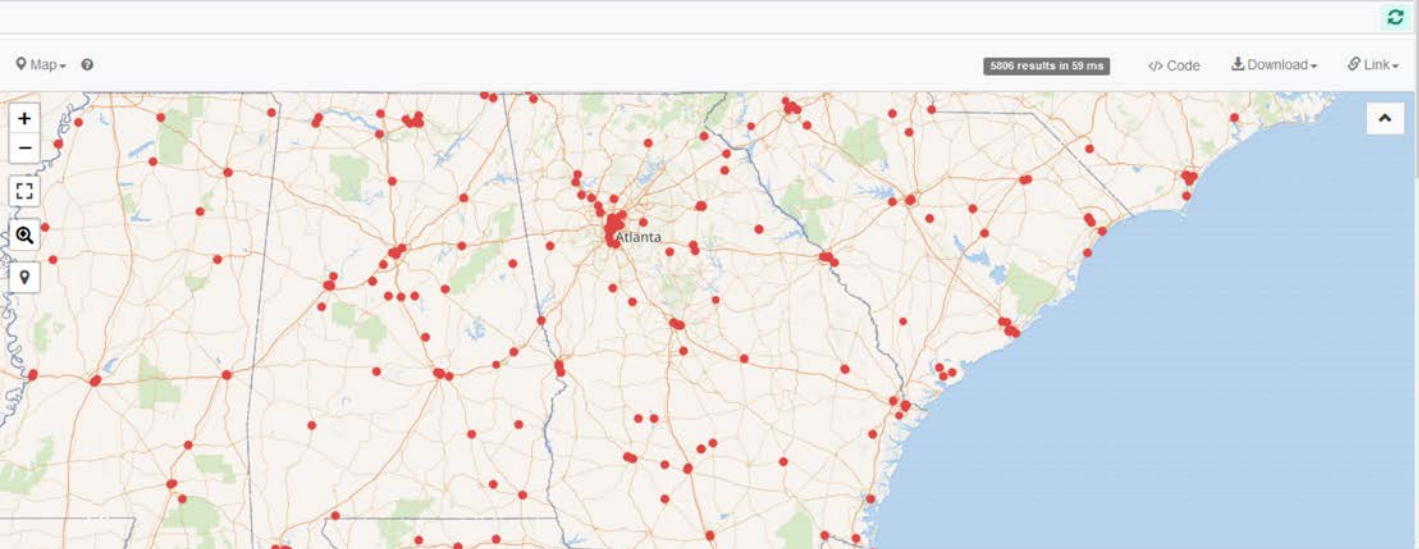
country United States of America

Show coordinate location

Limit 10000

```
1 #Map of Libraries in Canada
2 # Canadian libraries on a map (must have coordinates!)
3 #defaultView:Map
4 SELECT ?library ?libraryLabel ?coords WHERE {
5   SERVICE wikibase:label { bd:serviceParam wikibase:language "[AUTO_LANGUAGE],en,en-gb";
6     ?library (wdt:P31/(wdt:P279*)) wd:Q1030034;
7     wdt:P17 wd:Q30;
8     wdt:P625 ?coords.
9 }
10 LIMIT 10000
```


GLAM in USA  
with  
coordinate  
information



# Find Hidden Institutions

www.grtm.org

## Georgia Rural Telephone Museum



The Georgia Rural Telephone Museum in Leslie, Georgia, is home to the largest collection of antique telephones and telephone memorabilia in the world.

The museum is open Monday through Friday, 9:00AM through 3:30PM

There is a nominal charge for admission to the museum. Please call (229) 874-4786 for details.

The Georgia Rural Telephone Museum is a not for profit organization.



Dear Visitor,

I am extremely proud to welcome you to the Georgia Rural Telephone Museum. Housed in this renovated 1920's cotton warehouse are the oldest and rarest examples of telecommunication in the world. Our exhibits date from 1876 to the 21st Century.

I would like to dedicate the museum to the men and women who worked so hard and so long to give us the greatest communication system in the world and to honor those who continue to work on new and innovative ideas for the future of the communication. In

## Georgia Rural Telephone Museum (Q5547793)

No description defined

[edit](#)

[+ in more languages](#) [Configure](#)

| Language            | Label                          | Description            | Also known as |
|---------------------|--------------------------------|------------------------|---------------|
| English             | Georgia Rural Telephone Museum | No description defined |               |
| Spanish             | No label defined               | No description defined |               |
| Traditional Chinese | No label defined               | No description defined |               |
| Chinese             | No label defined               | No description defined |               |

### Statements

instance of

[telecommunications museum](#)

[- 0 references](#)

[+ add reference](#)

[+ add value](#)

country


[United States of America](#)

[- 0 references](#)

[+ add reference](#)

[+ add value](#)

coordinate location



[+ 1 reference](#)

[+ add value](#)

[+ add statement](#)

Wikipedia (1 entry) [edit](#)

[en](#) Georgia Rural Telephone Museum

Wikibooks (0 entries) [edit](#)

# Project Design



- Create a **publicly editable directory** of Georgia's Natural, Cultural and Historical Organizations (NCHs) in Wikidata
- Quick retrieval of **location and contact information for disaster response**.
- Develop **website** with custom queries



# 1. Gather and verify data.

| Organization                                      | Instance of        | Instance of | Parent organization                               | Address                                       |
|---|--------------------|-------------|---|---|
| Ty Cobb Museum                                    | Museum             |             |   | 461 Cook St, Royston, GA 30662                |
| 6th Cavalry Museum                                | Museum             |             |   | #6 Barnhardt Circle, PO Box 2011 Fort Ogle    |
| Acworth Society for Historic Preservation         | Historical Society |             |   | P.O. Box 851 Acworth, GA 30101                |
| McCain Library Special Collections                | Archive            |             | Agnes Scott College                               | McCain Library Special Collections 141 E. C   |
| Albany Civil Rights Movement Museum               | Museum             |             | Albany Civil Rights Institute                     | Albany Civil Rights Institute 326 Whitney A   |
| Alexander H. Stephens State Park                  | State Park         |             |   | P. O. Box 310, 456 Alexander Street NW Cr     |
| All Saints' Episcopal Church Archives and Library | Archive            |             |   | 634 West Peachtree SW, Atlanta, GA 30301      |
| Allman Brothers and Band Museum                   | Museum             |             |   | P.O. Box 4291, 2321 Vineville Avenue Mac      |
| Alma-Bacon County Historical Society              | Historical Society |             |   | 406 Mercer, 201 N. Pierce Street Alma, GA     |
| Alpha Delta Pi Sorority Memorial Headquarters     | Archive            |             |   | 1386 Ponce De Leon Avenue, N.E., Atlanta,     |
| Alpharetta Historical Society                     | Historical Society |             |   | 1835 Old Milton Parkway, Alpharetta, GA 3     |
| Altama Museum of Art and History                  | Museum             |             |   | PO Box 33, P. O. Box 33 Vidalia, GA 30474     |
| Altamaha Technical College Library                | Academic Library   |             |   | 1777 W. Cherry St., Jesup, GA 31545           |
| American Baptist Historical Archive               | Archive            |             | American Baptist Historical Society               | American Baptist Historical Society 3001 M    |
| American Cherokee Confederacy                     | Archive            |             |   | 619 Pine Cone Road, Albany, GA 31705          |
| Andersonville National Historic Site              | Historic Site      |             |   | 496 Cemetery Road, Andersonville, GA 317      |
| Andersonville National Historic Site              | Historic Site      |             | National P.O.W. Museum                            | National P.O.W. Museum 496 Cemetery Rc        |
| Andersonville Old Time Farm Area and Museum       | Museum             |             |   | 109 East Church Street, P. O. Box 6 Anders    |
| Andrew College Archives                           | Archive            |             |   | Pitts Library 413 College Street, Cuthbert, C |
| Andrew Low House                                  | Historic Site      |             | National Society of the Colonial Dames of America | National Society of the Colonial Dames of .   |
| Ansley Park Civic Association                     | Historical Society |             |   | P. O. Box 77125, Atlanta, GA 30357            |
| Apex Museum                                       | Museum             |             |   | 135 Auburn Avenue, N.E. Atlanta, GA 30301     |
| Appling County Heritage Center                    | Historical Society |             |   | P.O. Box 87, 209 Thomas Street Baxley, GA     |
| Archibald Smith Plantation Home                   | Historic Site      |             |   | 935 Alpharetta Street Roswell, GA 30075       |
| Lane Library                                      | Academic Library   |             | Armstrong Atlantic State University               | Lane Library, Minis Room Collection 11935     |
| Army Reserve Office of History                    | Office             |             | Department of the Army U.S. Army Reserve Command  | Department of the Army U.S. Army Reserve      |
| Arts and Heritage Council of Pelham               | Historical Society |             |   | 4152 Railroad St., South, P. O. Box 389 Pell  |
| Ashantilly Center                                 | Historical Society |             |   | 15591 GA Hwy 99 , PO Box 1449 Darien, G       |

## 2. Load spreadsheets into OpenRefine.

| 10 rowsSchemaIssues60Preview  |  |   |                                  |                                  |  |  |                                  |                                  |                                  |                                  |                                  |                     | Extensions:Wikidata |  |
|---|--|---|----------------------------------|----------------------------------|--|--|----------------------------------|----------------------------------|----------------------------------|----------------------------------|----------------------------------|---------------------|---------------------|--|
| Show as: rowsrecords  |  |   | Show: 5102550rows                |                                  |  | » first   previous1-10next   last »    |                                  |                                  |                                  |                                  |                                  |                     |                     |  |
| All   | Organization   | Label   | Instance of                      | Parent organization              | located at street address                          | PO Box                                 | City                             | State                            | Country                          | PostCode                         | County                           |                     |                     |  |
|  | 1. Ty Cobb Museum                                    | Ty Cobb Museum                                    | museum                           |                                  | 401 Cook St, Royston, GA 30682                     |  | Royston                          | Georgia                          | United States of America         | 30682-3902                       | Franklin County                  | 34.                 |                     |  |
|   | <a href="#">Choose new match</a>                     | <a href="#">Choose new match</a>                  | <a href="#">Choose new match</a> |                                  | <a href="#">Create new item</a>                    |  | <a href="#">Choose new match</a> | <a href="#">Choose new match</a> | <a href="#">Choose new match</a> | <a href="#">Search for match</a> | <a href="#">Choose new match</a> | <a href="#">See</a> |                     |  |
|  | 2. 6th Cavalry Museum                                | 6th Cavalry Museum                                | museum                           |                                  | #6 Barnhardt Circle, Fort Oglethorpe, GA 30742     | PO Box 2011 Fort Oglethorpe, GA 30742  | Fort Oglethorpe                  | Georgia                          | United States of America         | 30742-3080                       | Catoosa County                   | 34.                 |                     |  |
|   | <a href="#">Choose new match</a>                     | <a href="#">Choose new match</a>                  | <a href="#">Choose new match</a> |                                  | <a href="#">Create new item</a>                    | <a href="#">Create new item</a>        | <a href="#">Choose new match</a> | <a href="#">Choose new match</a> | <a href="#">Choose new match</a> | <a href="#">Search for match</a> | <a href="#">Choose new match</a> | <a href="#">See</a> |                     |  |
|  | 3. Aoworth Society for Historic Preservation         | Aoworth Society for Historic Preservation         | historical society               |                                  | P.O. Box 851 Aoworth, GA 30101                     | P.O. Box 851 Aoworth, GA 30101         | Aoworth                          | Georgia                          | United States of America         | 30101-7604                       | Cobb County                      | 34.                 |                     |  |
|   | <a href="#">Choose new match</a>                     | <a href="#">Choose new match</a>                  | <a href="#">Choose new match</a> |                                  | <a href="#">Create new item</a>                    | <a href="#">Create new item</a>        | <a href="#">Choose new match</a> | <a href="#">Choose new match</a> | <a href="#">Choose new match</a> | <a href="#">Search for match</a> | <a href="#">Choose new match</a> | <a href="#">See</a> |                     |  |
|  | 4. McCain Library Special Collections                | McCain Library Special Collections                | archive                          | Agnes Scott College              | 141 E. College Avenue, Decatur, GA 30030           |  | Decatur                          | Georgia                          | United States of America         | 30030-3743                       | DeKalb County                    | 33.                 |                     |  |
|   | <a href="#">Choose new match</a>                     | <a href="#">Choose new match</a>                  | <a href="#">Choose new match</a> | <a href="#">Choose new match</a> | <a href="#">Create new item</a>                    |  | <a href="#">Choose new match</a> | <a href="#">Choose new match</a> | <a href="#">Choose new match</a> | <a href="#">Search for match</a> | <a href="#">Choose new match</a> | <a href="#">See</a> |                     |  |
|  | 5. Albany Civil Rights Movement Museum               | Albany Civil Rights Movement Museum               | museum                           | Albany Civil Rights Institute    | 326 Whitney Avenue, Albany, GA 31706               | PO Box 6036 Albany, GA 31706           | Albany                           | Georgia                          | United States of America         | 31701-3281                       | Dougherty County                 | 31.                 |                     |  |
|   | <a href="#">Choose new match</a>                     | <a href="#">Choose new match</a>                  | <a href="#">Choose new match</a> | <a href="#">Choose new match</a> | <a href="#">Create new item</a>                    | <a href="#">Create new item</a>        | <a href="#">Choose new match</a> | <a href="#">Choose new match</a> | <a href="#">Choose new match</a> | <a href="#">Search for match</a> | <a href="#">Choose new match</a> | <a href="#">See</a> |                     |  |
|  | 6. Alexander H Stephens Memorial State Park          | Alexander H Stephens Memorial State Park          | state park                       |                                  | 456 Alexander Street NW, Crawfordville, GA 30531   | P. O. Box 310, Crawfordville, GA 30531 | Crawfordville                    | Georgia                          | United States of America         | 30531-2804                       | Taliaferro County                | 33.                 |                     |  |
|   | <a href="#">Choose new match</a>                     | <a href="#">Choose new match</a>                  | <a href="#">Choose new match</a> |                                  | <a href="#">Create new item</a>                    | <a href="#">Create new item</a>        | <a href="#">Choose new match</a> | <a href="#">Choose new match</a> | <a href="#">Choose new match</a> | <a href="#">Search for match</a> | <a href="#">Choose new match</a> | <a href="#">See</a> |                     |  |
|  | 7. All Saints' Episcopal Church Archives and Library | All Saints' Episcopal Church Archives and Library | archive                          |                                  | 634 West Peachtree SW, Atlanta, GA 30308           |  | Atlanta                          | Georgia                          | United States of America         | 30308-2202                       | Fulton County                    | 33.                 |                     |  |
|   | <a href="#">Choose new match</a>                     | <a href="#">Choose new match</a>                  | <a href="#">Choose new match</a> |                                  | <a href="#">Create new item</a>                    |  | <a href="#">Choose new match</a> | <a href="#">Choose new match</a> | <a href="#">Choose new match</a> | <a href="#">Search for match</a> | <a href="#">Choose new match</a> | <a href="#">See</a> |                     |  |
|  | 8. The Allman Brothers Band Museum                   | The Allman Brothers Band Museum                   | museum                           |                                  | 2321 Vineville Avenue, Macon, Georgia 31208        | P.O. Box 4291, Macon, Georgia 31208    | Macon                            | Georgia                          | United States of America         | 31204-3167                       | Bibb County                      | 32.                 |                     |  |
|   | <a href="#">Choose new match</a>                     | <a href="#">Choose new match</a>                  | <a href="#">Choose new match</a> |                                  | <a href="#">Create new item</a>                    | <a href="#">Create new item</a>        | <a href="#">Choose new match</a> | <a href="#">Choose new match</a> | <a href="#">Choose new match</a> | <a href="#">Search for match</a> | <a href="#">Choose new match</a> | <a href="#">See</a> |                     |  |
|  | 9. Alma-Bacon County Historical Society              | Alma-Bacon County Historical Society              | historical society               |                                  | 405 Mercer, 201 N. Pierce Street, Alma, GA 31510   |  | Alma                             | Georgia                          | United States of America         | 31510-2136                       | Bacon County                     | 31.                 |                     |  |
|   | <a href="#">Choose new match</a>                     | <a href="#">Choose new match</a>                  | <a href="#">Choose new match</a> |                                  | <a href="#">Create new item</a>                    |  | <a href="#">Choose new match</a> | <a href="#">Choose new match</a> | <a href="#">Choose new match</a> | <a href="#">Search for match</a> | <a href="#">Choose new match</a> | <a href="#">See</a> |                     |  |
|  | 10. Alpha Delta Pi Sorority Memorial Headquarters    | Alpha Delta Pi Sorority Memorial Headquarters     | archive                          |                                  | 1385 Ponce De Leon Avenue, N.E., Atlanta, GA 30306 |  | Atlanta                          | Georgia                          | United States of America         | 30307-1651                       | DeKalb County                    | 33.                 |                     |  |
|   | <a href="#">Choose new match</a>                     | <a href="#">Choose new match</a>                  | <a href="#">Choose new match</a> |                                  | <a href="#">Create new item</a>                    |  | <a href="#">Choose new match</a> | <a href="#">Choose new match</a> | <a href="#">Choose new match</a> | <a href="#">Search for match</a> | <a href="#">Choose new match</a> | <a href="#">See</a> |                     |  |



### 3. Reconcile data against Wikidata's schema.

The Wikidata schema below specifies how your tabular data will be transformed into Wikidata edits. You can drag and drop the column names below in most input boxes: for each row, edits will be generated for values in these columns.

| Organization   | Label | Instance of | Parent organization | located at street address | PO Box | City | State | Country | PostCode | County | coordinates | Founded |
|--|-------|-------------|---------------------|---------------------------|--------|------|-------|---------|----------|--------|-------------|---------|
| <b>Organization</b> <div>Terms</div> <div>Label <input type="text"/> en <input type="text"/></div> <div>Statements</div> <div>instance of <input type="text"/></div> <div>located at street address <input type="text"/></div> <div>PO Box <input type="text"/></div> <div>located in the administrat <input type="text"/></div> <div>postal code <input type="text"/></div> |       |             |                     |                           |        |      |       |         |          |        |             |         |

## 4. Create references for each linked data triple.

The screenshot shows a web-based interface for editing Linked Data triples. It features a main workspace with a light blue background and a right-hand sidebar. In the workspace, a triple is being edited: the subject is 'located at street address' (highlighted with a green border), the predicate is 'located at street addr...' (with a dropdown arrow and a trash icon), and the object is 'PO Box' (also highlighted with a green border). The sidebar on the right contains a list of references for the predicate. The first reference is 'stated in' (highlighted with a green border), followed by 'Directory of Historical and Cultural Organizations, C56232860' (with a trash icon). A dropdown menu is open for the 'stated in' reference, showing a list of items to select from: 'Directory of Historical and Cultural Organizations, C56232860' and 'Database of organizations in Georgia, United States'. The interface also includes a '+ add qualifier' button and a 'remove' button for the triple.

located at street address

located at street addr...

+ add qualifier

▼ 1 references

stated in

Directory of Historical and Cultural Organizations, C56232860

Select an item from the list:

Directory of Historical and Cultural Organizations, C56232860

Database of organizations in Georgia, United States

PO Box

PO Box

# 5. Send updates to Wikidata.

1 rows Schema Issues 10 Preview

This tab shows the first edits (out of 1) that will be made once you upload the changes to Wikidata. You can use facets to inspect the edits on particular items.

Aragon Historical Society (new item)

|   |  |
|---|--|
| Label   | Aragon Historical Society (English)  |
| Description   | historical society in Aragon, Georgia, United States (English)   |
| country (P17)   | <span><span></span></span> United States of America (Q30)<br>► 0 references  |
| located in the administrative territorial entity (P131) | <span><span></span></span> Aragon (Q2009134)<br>► 0 references<br><span><span></span></span> Georgia (Q1428)<br>► 0 references<br><span><span></span></span> Polk County (Q498395)<br>► 0 references |
| coordinate location (P625)                              | <span><span></span></span> <span><span><span><span>34°2′32.46″N</span>, <span>85°3′44.24″W</span></span></span><br/>► 0 references</span>  |
| postal code (P281)                                      | <span><span></span></span> 30104-0333<br>► 0 references  |
| official website (P856)                                 | <span><span></span></span> <a href="https://www.facebook.com/AragonHistoricalSociety/">https://www.facebook.com/AragonHistoricalSociety/</a><br>► 0 references                                       |
| instance of (P31)                                       | <span><span></span></span> Historical society (Historical society)<br>► 0 references   |
| located at street address (P6375)                       | <span><span></span></span> 105 NEW PROSPECT R (English)<br>► 1 references  |
| e-mail address (P968)                                   | <span><span></span></span> <a href="mailto:info@aragonhistory.org">mailto:info@aragonhistory.org</a><br>► 0 references   |



Main page  
Community portal  
Project chat  
Create a new item  
Create a new Lexeme  
Recent changes  
Random item  
Query Service  
Nearby  
Help  
Donate  
  
Print/export  
Create a book  
Download as PDF  
Printable version  
  
Tools  
What links here  
Related changes  
Special pages  
Permanent link  
Page information  
Concept URI  
Cite this page

Item

Discussion

Wiki Loves Monuments: Photograph a monument, help Wikipedia and w

Learn more

**Aragon Historical Society** (Q67151546)

historical society in Aragon, Georgia, United States

In more languages

Configure

| Language            | Label                     | Description  |
|---------------------|---------------------------|--|
| English             | Aragon Historical Society | historical society in Aragon, Georgia, United States |
| Spanish             | No label defined          | No description defined                               |
| Traditional Chinese | No label defined          | No description defined                               |
| Chinese             | No label defined          | No description defined                               |

**Statements**

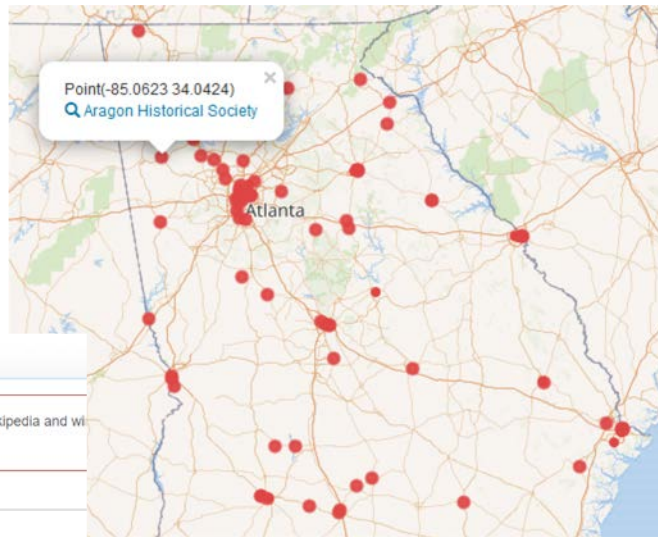
instance of

historical society

► 0 references

country

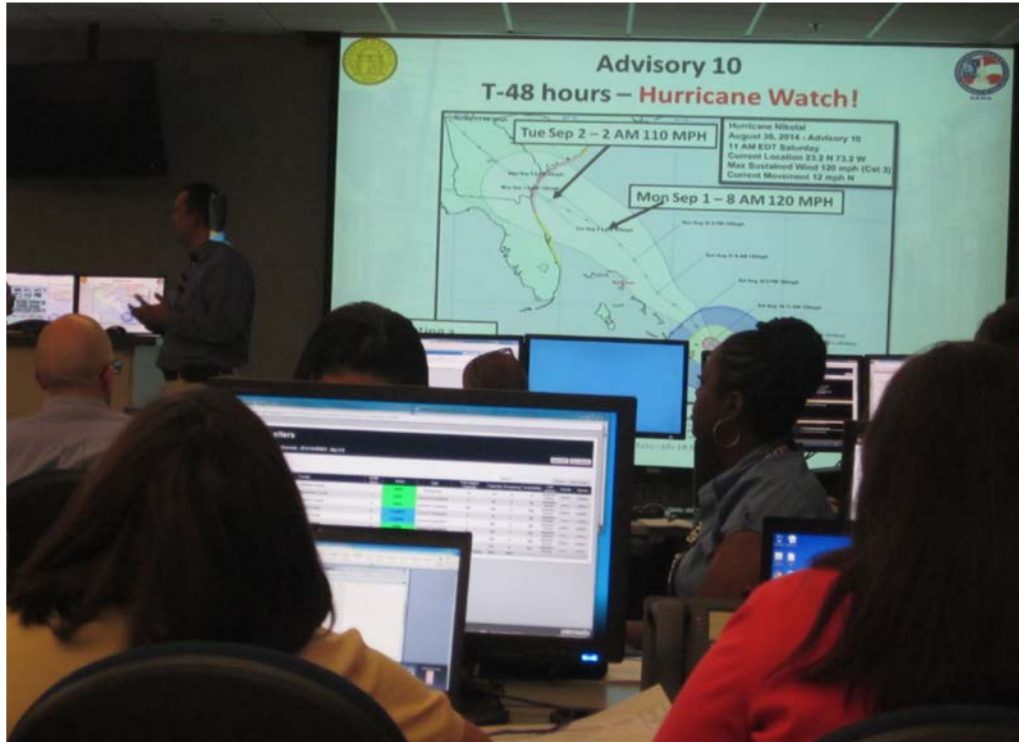
United States of America



## 6. Create a website with custom queries (by county and by city).

| library                        | libraryLabel                                 | address                                  | phone_number | coordinate_location     |
|--------------------------------|--|--|--------------|-------------------------|
| <a href="#">Q wd:Q5445034</a>  | Fernbank Science Center                      |  |              | Point(-84.3181 33.7785) |
| <a href="#">Q wd:Q7697704</a>  | Tellus Science Museum                        |  |              | Point(-84.7708 34.2422) |
| <a href="#">Q wd:Q953345</a>   | High Museum of Art                           | 1280 Peachtree Street                    |              | Point(-84.3852 33.7905) |
| <a href="#">Q wd:Q2402114</a>  | Telfair Museums                              |  |              | Point(-81.0953 32.0789) |
| <a href="#">Q wd:Q2422767</a>  | SCAD Museum of Art                           |  |              | Point(-81.0987 32.0773) |
| <a href="#">Q wd:Q4499773</a>  | Seby Jones Library                           |  |              | Point(-83.3567 34.5944) |
| <a href="#">Q wd:Q6002707</a>  | Imagine It! The Children's Museum of Atlanta |  |              | Point(-84.3915 33.7621) |
| <a href="#">Q wd:Q6829008</a>  | Michael C. Carlos Museum                     |  |              | Point(-84.3242 33.7903) |
| <a href="#">Q wd:Q5684999</a>  | Hawkes Children's Library of West Point      |  |              | Point(-85.1817 32.8764) |
| <a href="#">Q wd:Q6780967</a>  | Mary Willis Library                          |  |              | Point(-82.7381 33.7353) |
| <a href="#">Q wd:Q5547611</a>  | Georgia Museum of Art                        |  |              | Point(-83.3701 33.941)  |
| <a href="#">Q wd:Q5645872</a>  | Hammonds House Museum                        |  |              | Point(-84.4209 33.7412) |
| <a href="#">Q wd:Q5946801</a>  | Hum Museum                                   |  |              |                         |
| <a href="#">Q wd:Q6974462</a>  | National Museum of Commercial Aviation       |  |              | Point(-84.3933 33.6067) |
| <a href="#">Q wd:Q17986248</a> | Candler Field Museum                         |  |              | Point(-84.3717 33.1833) |
| <a href="#">Q wd:Q29092822</a> | Carnegie Library of Moultrie                 |  |              | Point(-83.7892 31.1806) |
| <a href="#">Q wd:Q43079647</a> | Lavonia-Carnegie Library                     | 28 Hartwell Road, Lavonia, Georgia 30553 |              | Point(-83.1039 34.4347) |
| <a href="#">Q wd:Q50572969</a> | Carnegie Colored Library                     |  |              |                         |

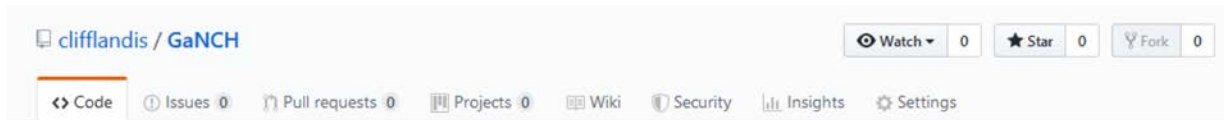
# Project Impact



- Over 1,500 Georgia NCH organizations identified
- Single location for emergency responders to identify NCHs in affected areas
- Model for other states
- Plan for sustainability



# Project GitHub Repository



Using Linked Open Data for Georgia's Natural, Cultural, and Historic Organizations' Disaster Response

linked-open-data glam disaster-response georgia Manage topics

7 commits 1 branch 0 releases

Branch: master New pull request

clifflandis +email address +official website

|                    |                                  |
|--------------------|----------------------------------|
| LICENSE            | Initial commit                   |
| README.md          | Initial commit                   |
| data_dictionary.md | +email address +official website |
| ghrac_scrape.py    | Create ghrac_scrape.py           |

README.md

## GANaCH

Using Linked Open Data for Georgia's Natural, Cultural, and Historic Orgar

### Data dictionary for the GaNCH project

This data dictionary defines the metadata that will be recorded for organizations.

Some fields are repeatable, such as "Instance of", where an organization can be both a museum and an archives at the same time.

Some fields are mapped to the same Wikidata property, such as "City", "County", and "State", all of which map to "located in the administrative territorial entity".

- **Label (Organization)** - REQUIRED: the organization's name
- **Instance of** - REQUIRED: that class of which this subject is a particular example and member (subject typically an individual member with a proper name label) (i.e., library, archives, museum, gallery, etc.)
- **Parent organization** - OPTIONAL: parent organization of an organization, opposite of subsidiaries (P355)
- **Address (located at street address)** - REQUIRED: full street address where subject is located. include building number through to post code. use also P669 if the street is known as a separate element
- **City (located in the administrative territorial entity)** - REQUIRED: the item is located on the territory of the following administrative entity
- **State (located in the administrative territorial entity)** - REQUIRED: the item is located on the territory of the following administrative entity
- **Country** - REQUIRED: Sovereign state of the item
- **PostCode (postal code)** - REQUIRED: identifier assigned by postal authorities for the subject area or building
- **County (located in the administrative territorial entity)** - REQUIRED: the item is located on the territory of the following administrative entity
- **Coordinates (coordinate location)** - REQUIRED: geocoordinates of the subject. For Earth, please note that only WGS84 coordinating system is supported at the moment
- **Founded (inception)** - RECOMMENDED: date or point in time when the subject came into existence as defined
- **Phone number** - REQUIRED: telephone number in standard format (RFC3966), without 'tel' prefix
- **E-mail address** - RECOMMENDED: e-mail address of the organisation. Format: prefixed with mailto:
- **Official website** - RECOMMENDED: URL of the official homepage of an item (current or former) [if the homepage changes, add an additional statement with preferred rank. Do not remove the former URL]

### Examples

- McCain Library Special Collections
- Acworth Society for Historic Preservation

<https://github.com/clifflandis/GaNCH>

# Sustainability Plan



- HERA/GEMA: Integrate final product into workflows
- GALILEO: Take over website hosting
- GALILEO/Georgia HomePLACE: Take over annual update schedule

Thank You!

Questions?



Cliff Landis  
Digital Initiatives Librarian

[jlandis@aucr.edu](mailto:jlandis@aucr.edu)

404-978-2155

Christine Wiseman  
Head, Digital Services  
Department

[cwiseman@aucr.edu](mailto:cwiseman@aucr.edu)

404-978-2038