

Open Data Toolkit Based on Diversity, Equity, Inclusion and Access Principles

Rachel Woodbrook on behalf of U-M Library
LYRASIS Member Meeting
October 3, 2019

Our Team



**Rachel
Woodbrook**

Data Curation Librarian
(U-M Library)



Jake Carlson

Dir., Deep Blue
Repositories and
Research Data Services
(U-M Library)

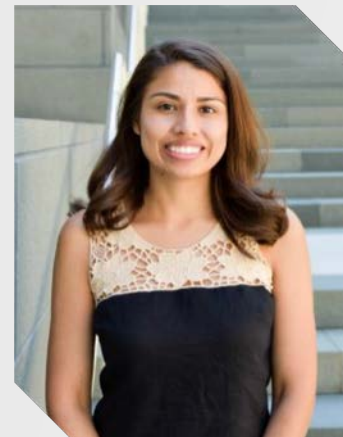
Karen Downing

Education Librarian
(U-M Library)



**Laura Sanchez-
Parkinson**

Asst Dir. of Programs &
Development; Program
Manager for Research
(National Center for
Institutional Diversity (NCID))



Our Team



**Tierra
Shannon***

B.A., English

Emma De Vera*

MLIS



**Chanese
Forté**

MPH, PhD candidate
in Environmental
Health Science and
Scientific Computing

Elyse Thulin

M.Sc, PhD pre-candidate
in Health Behavior/
Education and Scientific
Computing



Our Project



(Current) Audience

Diversity Scholars Network

Arts & Humanities

Physical & Natural Sciences

Social Sciences

Emerging Diversity Scholars Network



Profile Search



Filter by Last Name: [All](#) [A](#) [B](#) [C](#) [D](#) [E](#) [F](#) [G](#) [H](#) [I](#) [J](#) [K](#) [L](#) [M](#) [N](#) [O](#) [P](#) [Q](#) [R](#) [S](#) [T](#) [U](#) [V](#) [W](#) [X](#) [Y](#) [Z](#)

Browse: Fields of Study ▼



Melissa V. Abad

Research Fellow at Michelle R. Clayman Institute for Gender Research at Stanford University

Diversity Scholar; Social Sciences; National Center for Institutional Diversity



Lamis Abdelaaty

Assistant Professor at Syracuse University

Social Sciences; Diversity Scholar; National Center for Institutional Diversity



Jorge Abril Sánchez

Lecturer in Spanish at the University of New Hampshire-Durham

Arts & Humanities; Diversity Scholar; National Center for Institutional Diversity

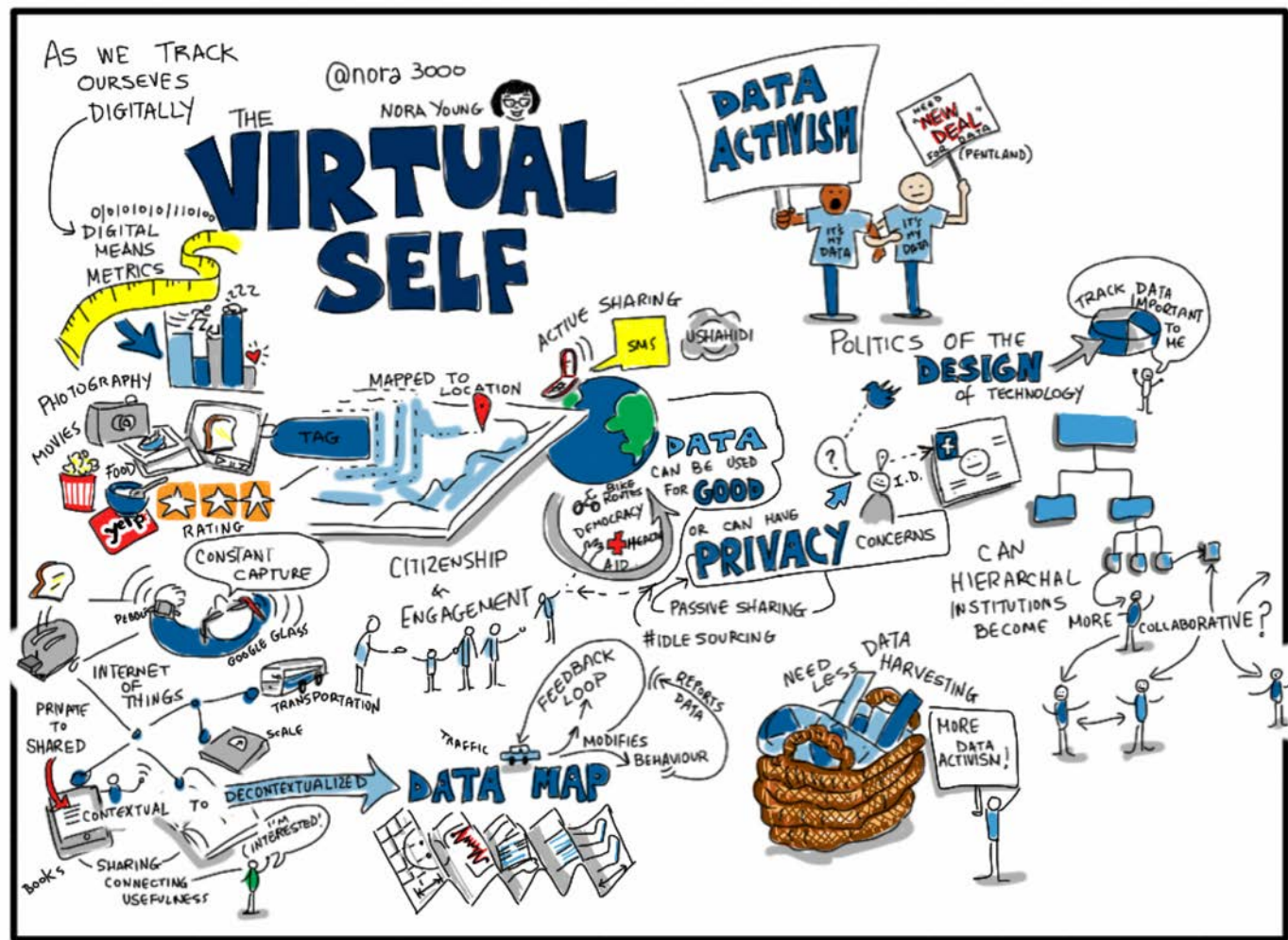


Omolade Abundi

Associate Professor in the Department of Afroamerican and African Studies at the University of Michigan

oadunbi@umich.edu

Social Sciences; Diversity Scholar; National Center for Institutional Diversity



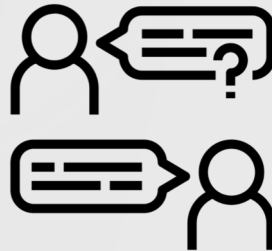
To Date



Literature Review



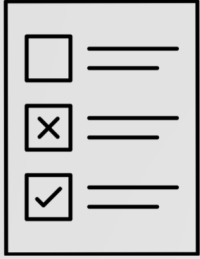
IRB Application



Interview Protocol(s)



To Do



Survey



Analysis

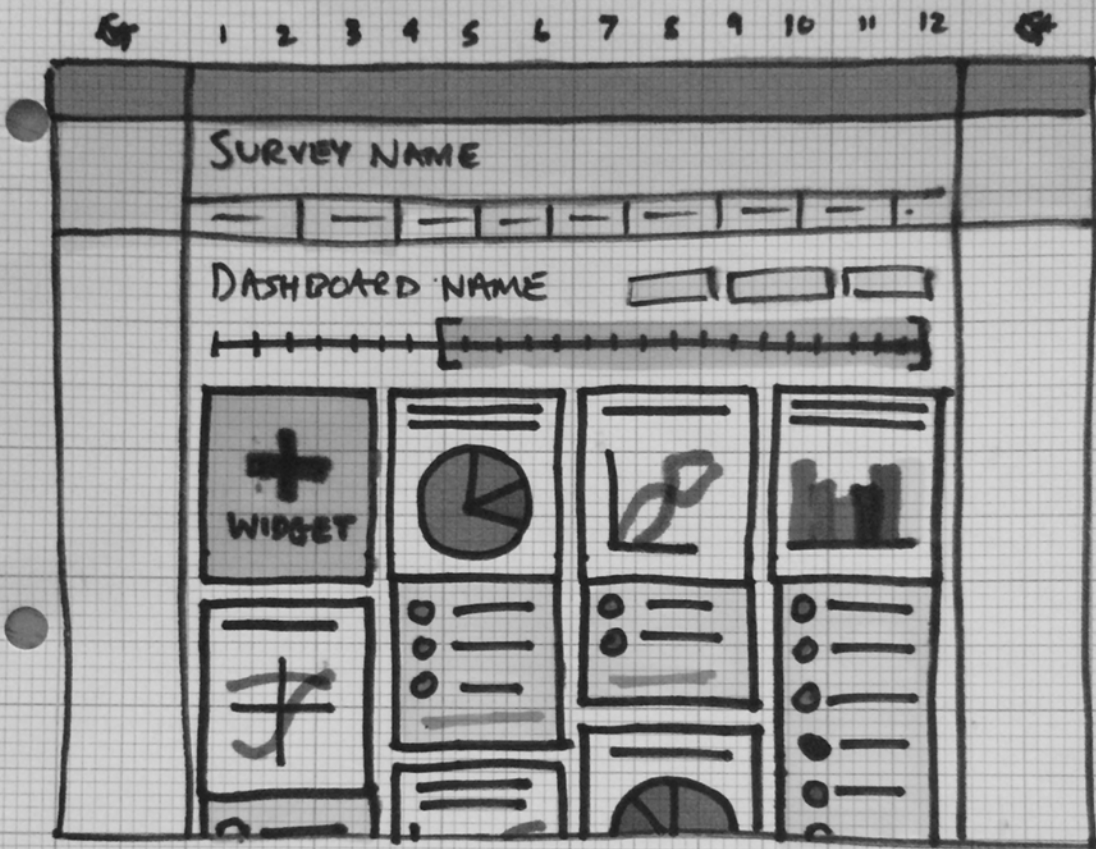


Toolkit



Distribution

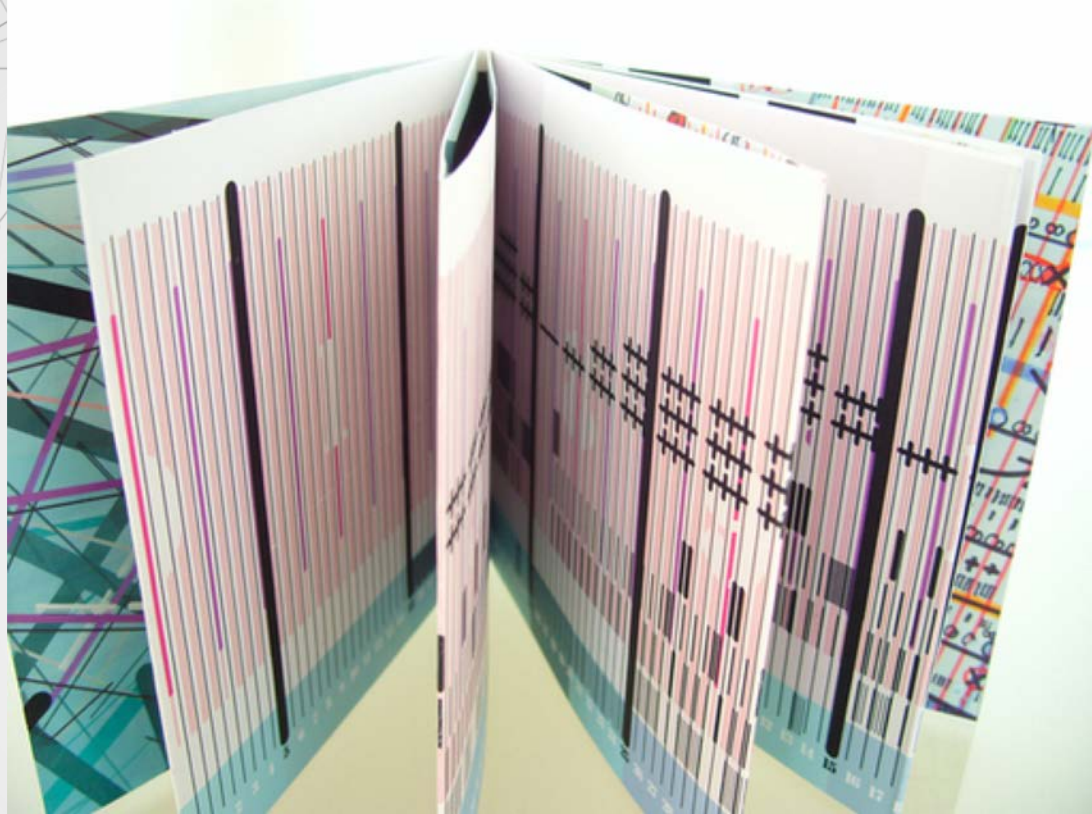


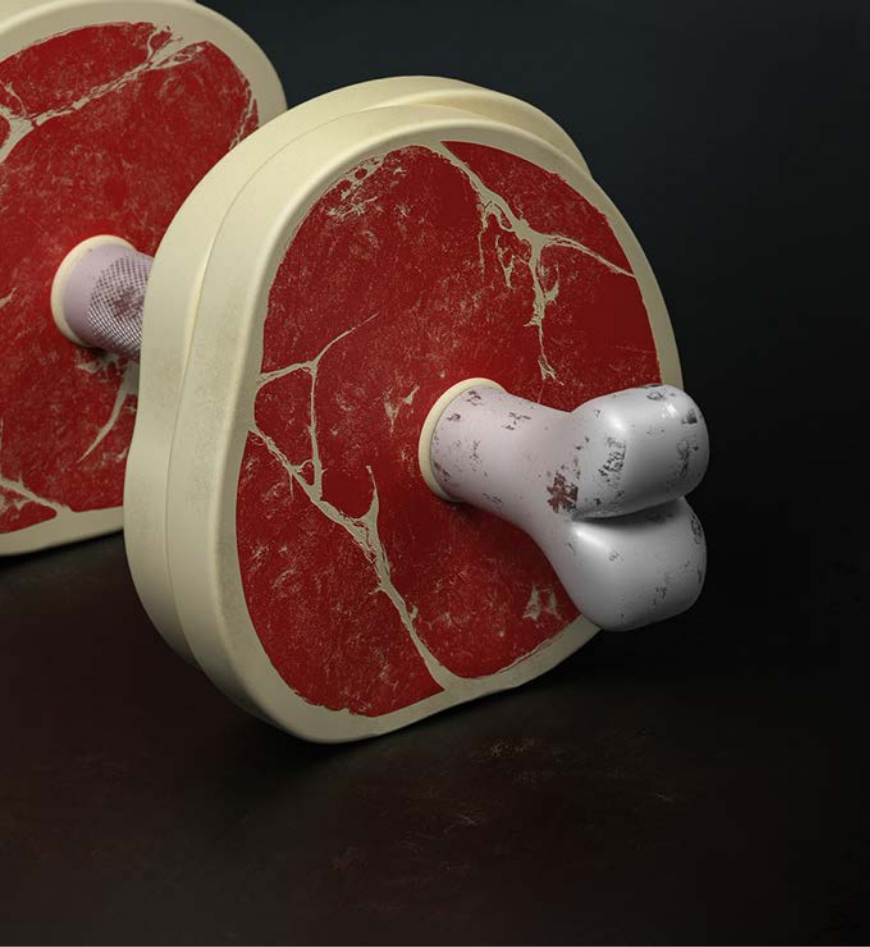


Deliverables



Sustainability

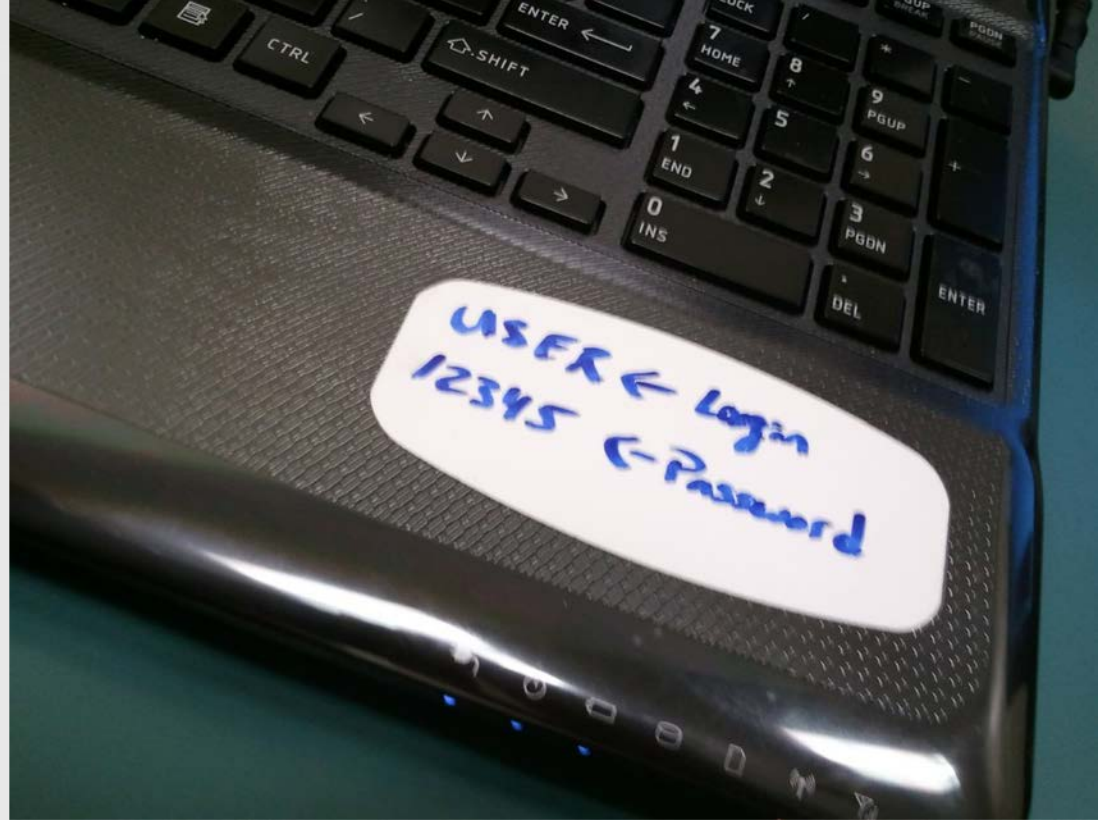




Strengths



Weaknesses





Opportunities




Follow our progress!

<http://bit.ly/DEIA-data-toolkit>





References

- ["The Big Data Takedown"](#) by RODAS ® [CC BY-NC-ND 4.0](#)
 - ["Virtual Self"](#) illustration by Giulia Forsythe; public domain.
 - Icons:
 - [articles](#) by I Putu Kharismayadi from the Noun Project
 - [application](#) by Richa from the Noun Project
 - [interview](#) by DailyPM from the Noun Project
 - [Question](#) by Graphic Tigers from the Noun Project
 - [Seo Report](#) by I Putu Kharismayadi from the Noun Project
 - [tools](#) by arif fauzi hakim from the Noun Project
 - [multicultural](#) by john melven from the Noun Project
 - ["First Mile Geo: Data visualisation"](#) Dashboard by Matt Homer [CC BY-NC-ND 4.0](#)
 - ["Esto es una canción - Libro"](#) by Carlos Bahamón [CC BY-NC-ND 4.0](#)
 - ["dumbbell"](#) by Дмитрий Куляев [CC BY-NC-ND 4.0](#)
 - ["Computer Password"](#) by [ChatWithMatt.com](#) is licensed under [CC BY-NC 2.0](#)
 - Movietone news field staff Sydney, 1938 [nla.gov.au/nla.obj-134788760](#)
 - Desktop image from <http://orgadv.com/2017/06/19/managing-a-cluttered-desktop/>
- 

The background of the slide features a complex, abstract geometric pattern. It consists of a network of thin, light gray lines that connect various points. Some of these points are represented by small, solid dark gray circles, while others are just the intersections of the lines. The pattern is more dense on the left side of the slide and becomes sparser towards the right. The overall effect is a modern, tech-inspired aesthetic.

Thank you

CREDITS: This presentation template was created by [Slidesgo](#), including icons by [Flaticon](#), and infographics & images by [Freepik](#).

Please keep this slide for attribution.